



TRILOK PRECAST

Mfg. RCC Precast Compound Wall

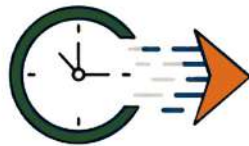




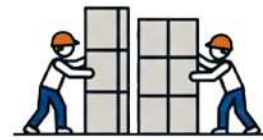
Streamline Your Construction Site with **Precast Solutions**



Less Hassle



Less Time



Fast Construction

About Us

We Trilok Precast Group, are leading manufacturer of RCC Precast Prestress Compound wall and other Precast Products at large scale since 2005 in Surat. Mainly, *“Customer's Satisfaction is our motto.”*

Why Choose Us

It can be moved at any time and any place. (Movable) We can install it faster than our ordinary/brick's wall.

- It is utilised less space than Bricks Wall
- It has better outlook and durability.
- It is fully RCC wall with prestress PCC Steel.
- It is more Affordable than the other substituted product

Our Mission

Trilok Precast is committed to provide high quality Products and Services in an Environment friendly manner, achieving the zenith level in the Cement Product industry, Meeting the needs of customers and Employees whilst adding value to the Community.

Our Vision

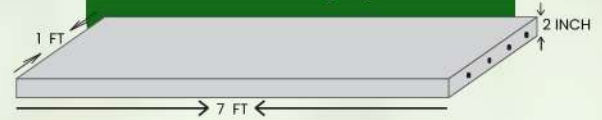
Trilok Precast Group will have 75 Plants worldwide with *“Concept of 21st Century”* and ISO 9001 : 2015 Co. By 2025. Trilok Precast will be at No.1 position in PrecastIndustry all Over India.

Specification

1. **Manufactured with Prestressed** Technology for superior strength and precision.
2. **M25 Grade Concrete Mix** ensures maximum durability and load-bearing capacity.
3. **In-house Casting & Quality Control** guarantee consistent product performance.
4. **High-Frequency Vibration Process** provides a smooth, dense, and flawless finish.
5. **Cured in Chlorinated Water (Minimum 7 Days)** for enhanced longevity and durability.
6. **Ready for On-site Installation** with assured reliability and strength.

Precast Panels Wall

Length 7 Feet (2133mm)
Height 1 Feet (300mm)
Width 2 inches (50mm)
We use 4 Bars of 3 mm or
4 mm HT Steel Perset,
with Stressing System

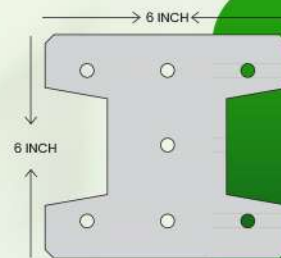


Basic Design

1. **Column Foundation:** Ensure each column is fixed in a 450 x 450 x 450 MM pit for maximum stability.
2. **Filling Material:** The pit should be filled with a mixture of cement, crush sand metal, and water for a strong foundation.
3. **Column Spacing:** Maintain a distance of 7 feet C/C (2.2 Mt. C/C) between two columns.
4. **Plank Installation:** Concrete planks are fitted horizontally between the columns after proper alignment.
5. **Concrete Grade:** M25 Grade Concrete is used for all components to ensure durability and long life.

Columns

Columns are 150 x 150 mm vertical H section. We use 7 bars of 3mm or 4mm HT steel, with stressing system. Length is depend on customer's requirement.



Basic Design of 5 feet

Prefabricated Folding Compound Wall



Available in 4 feet to 10 feet

Compound Wall

Compound wall can be made with the Different height of **4ft, 6ft, 8ft and 10ft**. The gamut of Designs is also Provided to the Customers, is more useful to them for making Perfect Decision as far as Designable wall Concerned.



Product



Kerb Stone



Dragon Fruit Pole



Saucer Drain



Precast House



Cable Trench



Precast Single Wall



Precast Bench



Precast Single Wall

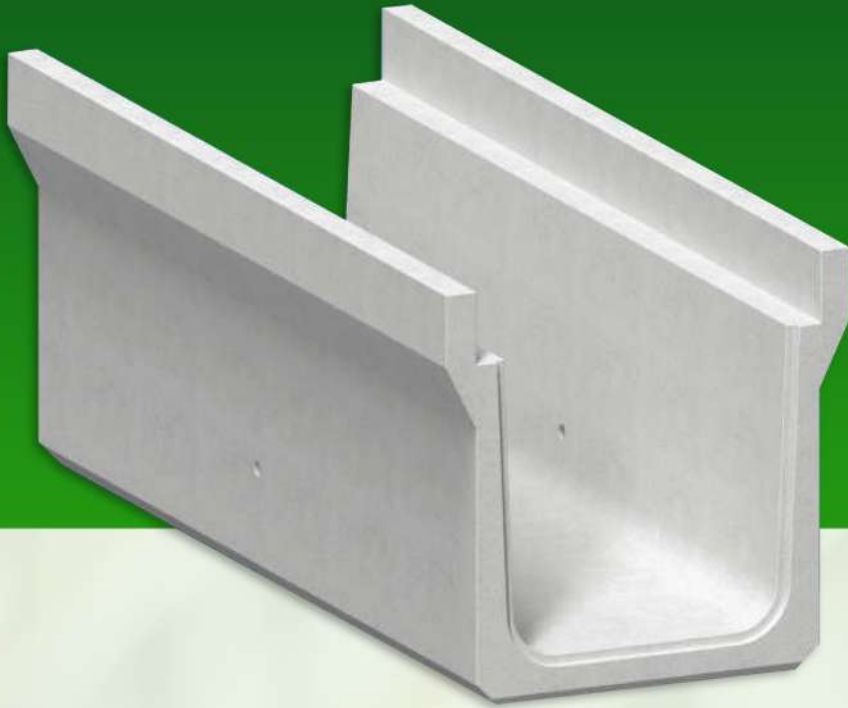


Precast Toilet



Precast Wall

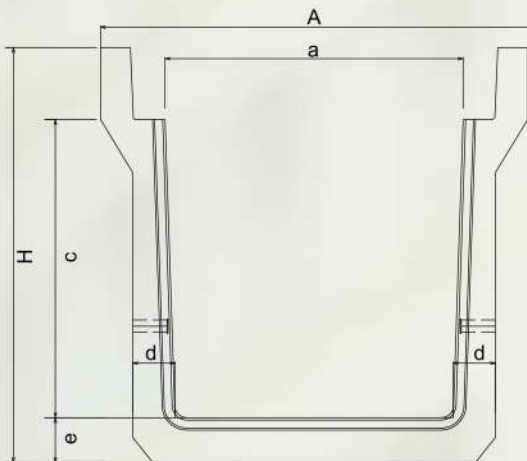
U SHAPE DRAIN (HEAVY)



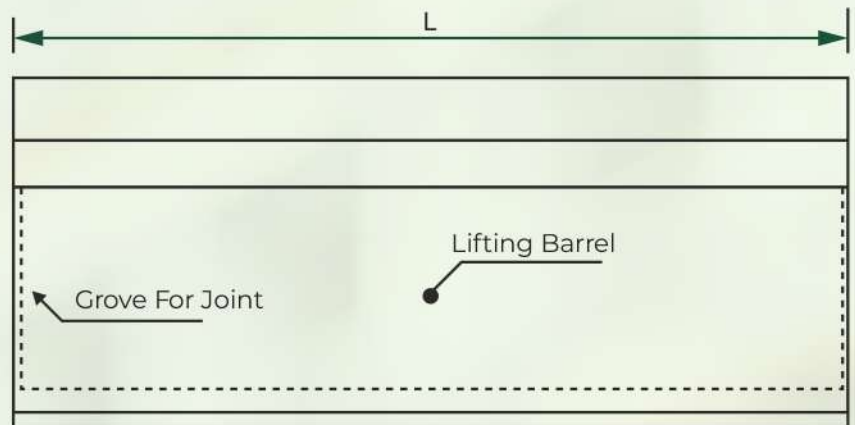
APPLICATIONS :

Such as storm water
Drains and Power and
Telecommunication
Cable Ducts

SECTION

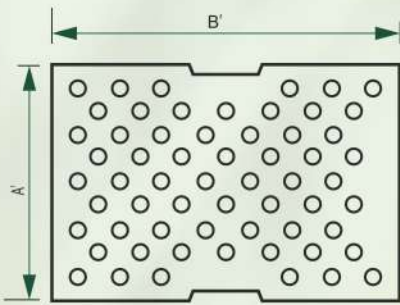


SIDE VIEW



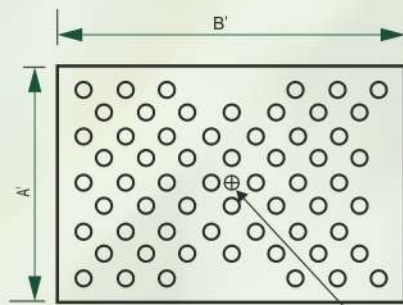
Size(mm)	Dimensions of U Shape Drain (mm)						
a x c	L	A	H	a	c	d	e
300 x 300	2000	540	480	300	300	65	70
450 x 450	2000	700	660	450	450	75	80
600 x 600	2000	860	835	600	600	85	90
750 x 750	2000	1050	1000	750	750	95	100
900 x 900	2000	1200	1170	900	900	115	120
1200 x 1200	2000	1500	1470	1200	1200	120	120

STANDARD COVER

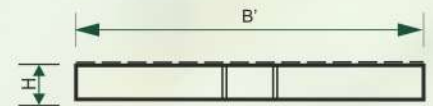


Cover Plan

WITHOUT HOLE COVER



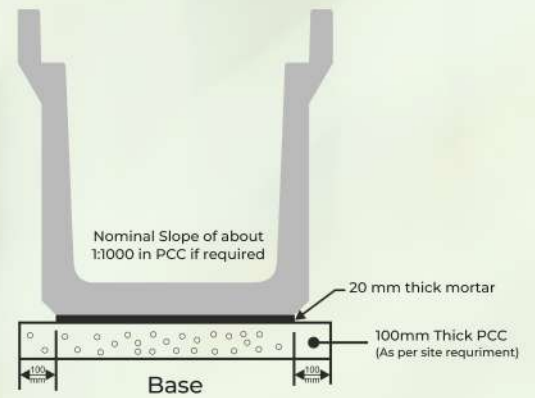
Cover Plan



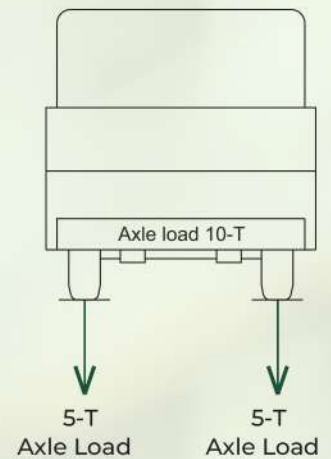
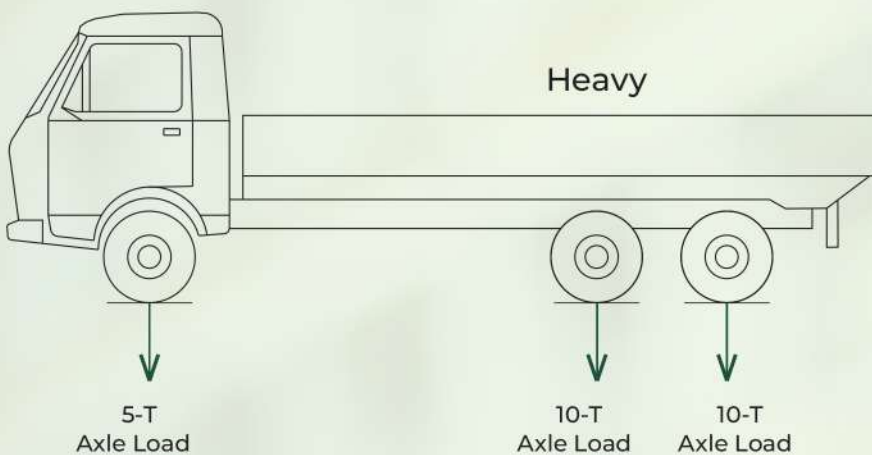
Cover Side View
Cover Hole

Lifting Barrel

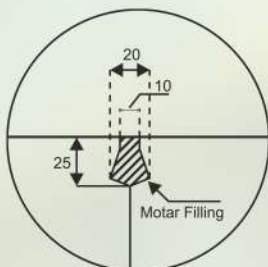
Drain Size(mm)	Dimensions of Cover (mm)		
	A'	B'	H
A' x B'			
300 x 300	410	500	110
450 x 450	565	500	130
600 x 600	710	500	140
750 x 750	890	500	145
900 x 900	1050	500	150
1200 x 1200	1330	1000	150



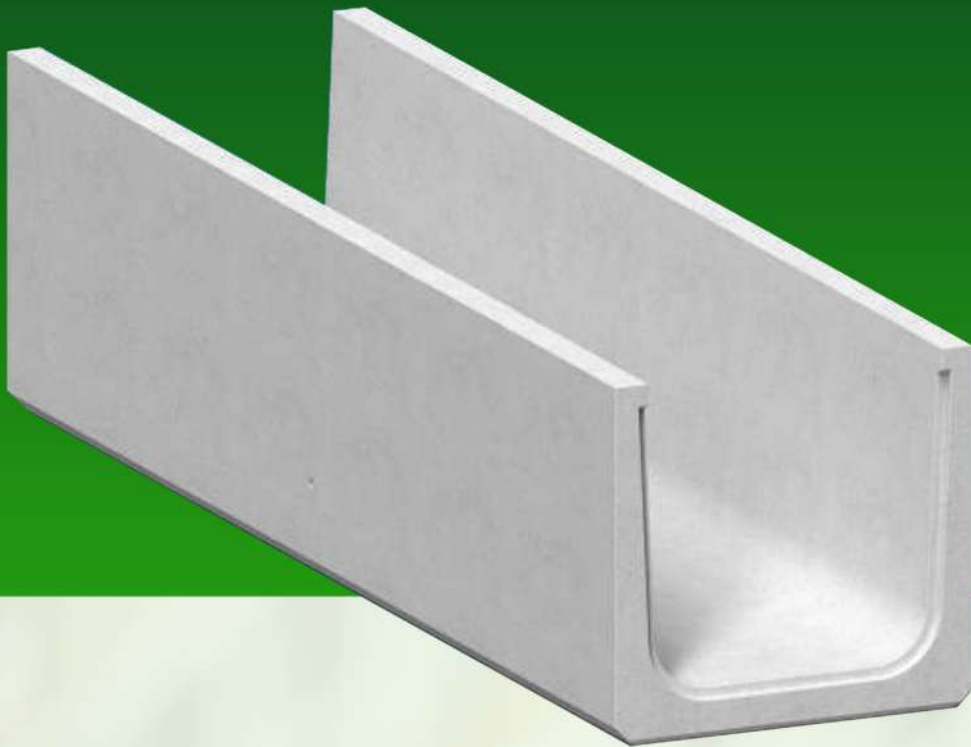
LOAD CARRYING CAPACITY : 5 T WHEEL LOAD



TYPICAL JOINT DETAILS



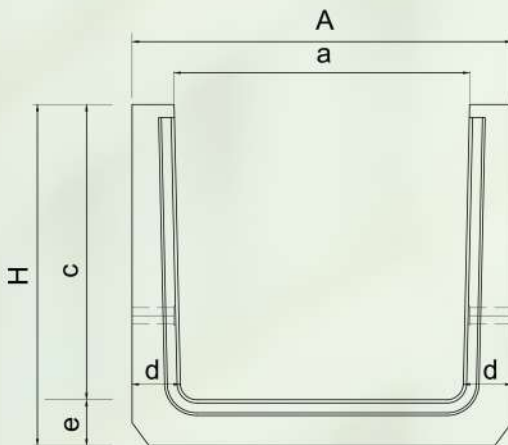
U SHAPE DRAIN (LIGHT)



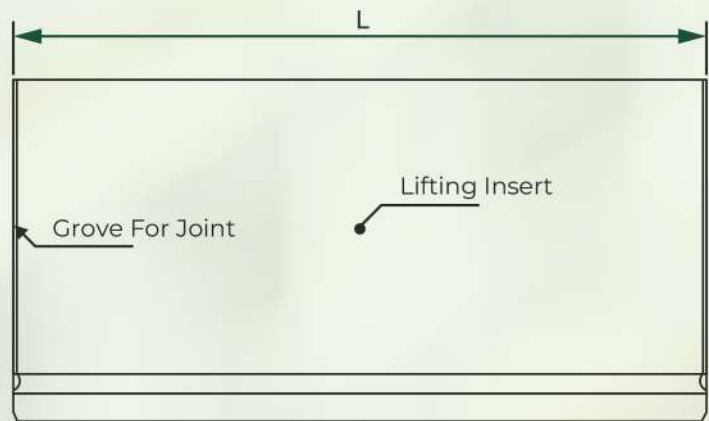
APPLICATIONS :

Such as storm water
Drains and Power and
Telecommunication
Cable Ducts

SECTION

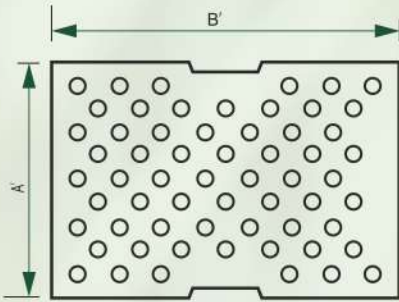


SIDE VIEW



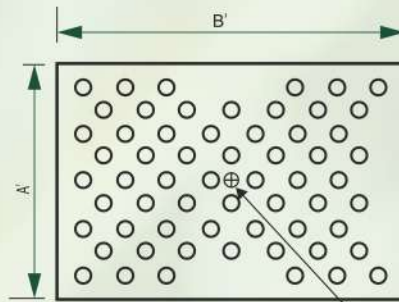
Size(mm)	Dimensions of U Shape Drain (mm) T-6						
a x c	L	A	H	a	c	d	e
300 x 300	2000	440	370	300	300	70	70
450 x 450	2000	610	520	450	450	75	70
600 x 600	2000	730	685	600	600	85	85
750 x 750	2000	890	845	750	750	95	95
900 x 900	2000	1070	1015	900	900	115	115

STANDARD COVER



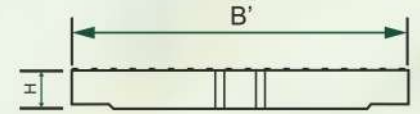
Cover plan

WITHOUT HOLE COVER



Cover plan

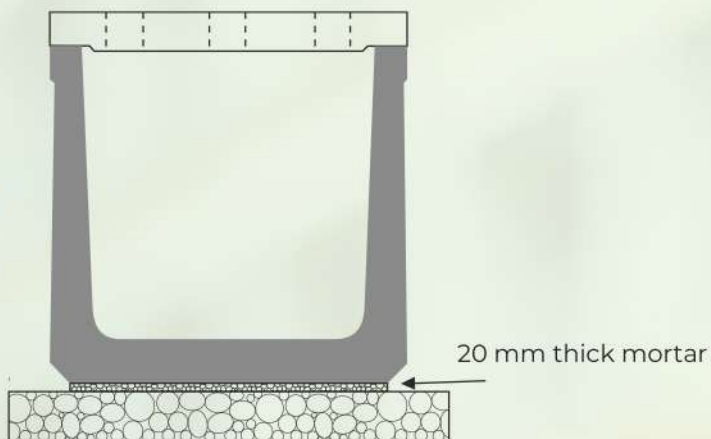
Lifting Barrel



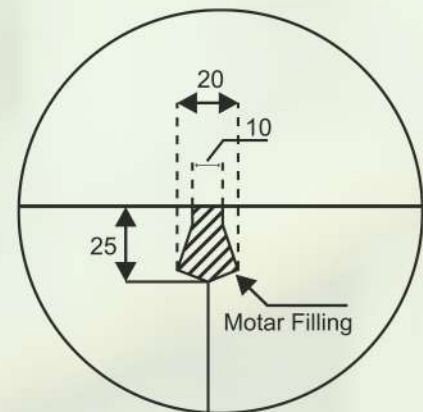
Cover Side View
Cover Hole

Drain Size(mm)	Dimensions of Cover (mm)		
	A'	B'	H
A' x B'	A'	B'	H
300 x 300	440	500	60
450 x 450	610	500	80
600 x 600	720	500	80
750 x 750	890	500	90
900 x 900	1060	500	100

TYPICAL FOUNDATION DETAILS



TYPICAL JOINT DETAILS



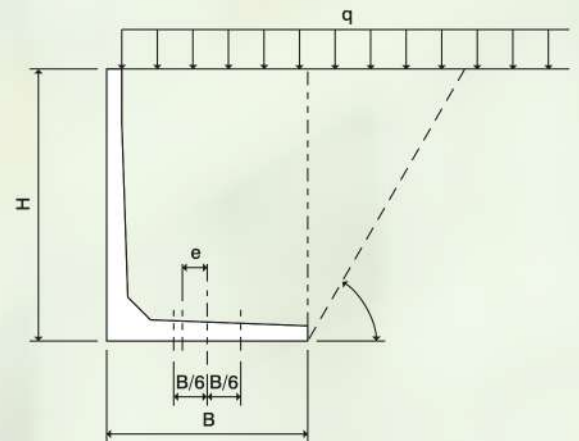
EARTH RETAINING WALL



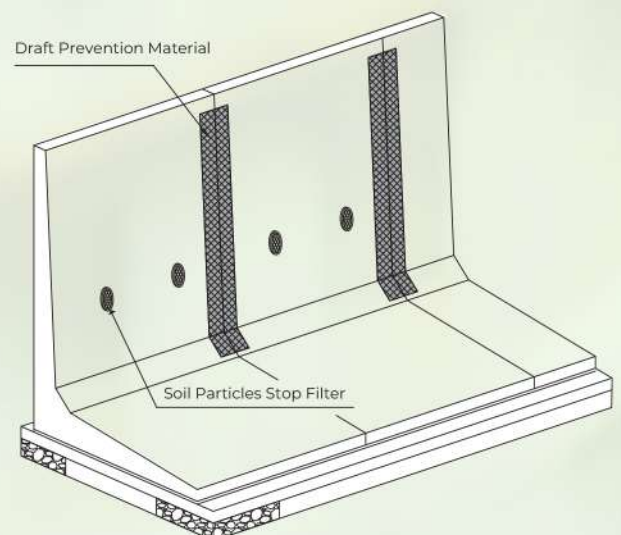
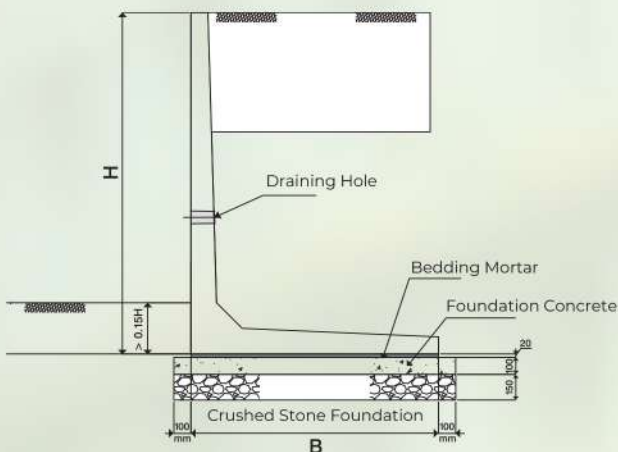
APPLICATIONS :

- For the prevention of the soil erosion.
- To retain the soil nearby, Culvert, Underpass, Bridge, etc.
- To provide the stability in sloped soil.
- Landscaping.

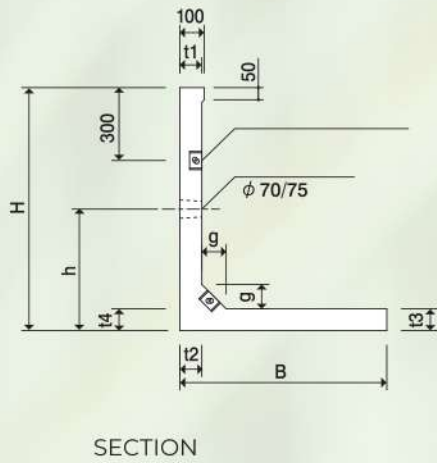
Reinforced Concrete Unit Weight	$\gamma_c = 24.5 \text{ kN/m}$
Unit Weight of soil	$\gamma_s = 19 \text{ kN/ms}$
Angle of internal friction of soil	$\phi = 30^\circ$
Overburden load	$q = 10 \text{ kN/m?}$
Sliding safety factor	$F_s \geq 1.5$
Eccentricity (for overtuning)	$ e \leq B/6$



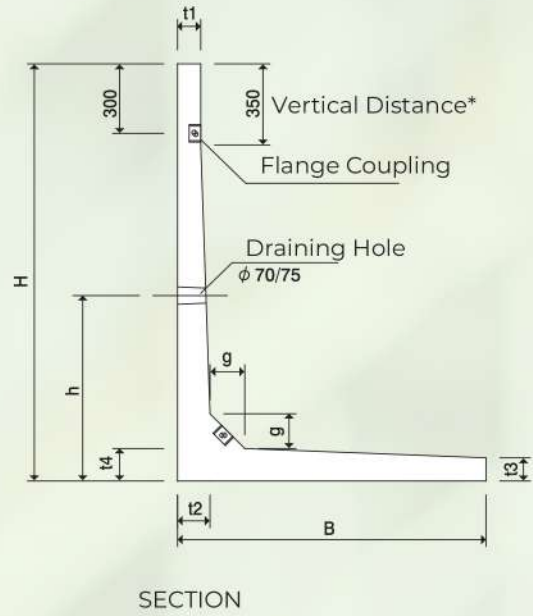
TYPICAL FOUNDATION DETAILS



H = 600 - H = 1000



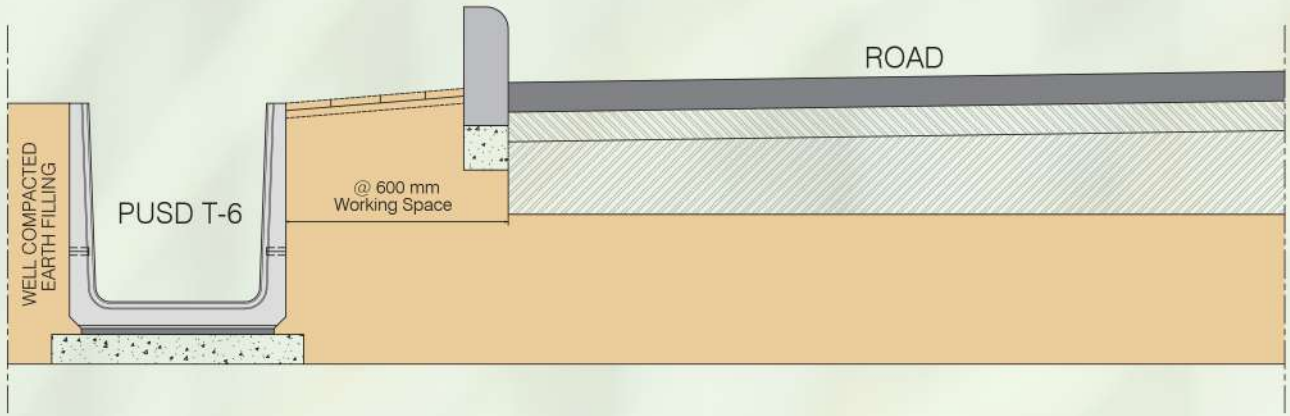
H = 1200 - H = 2500



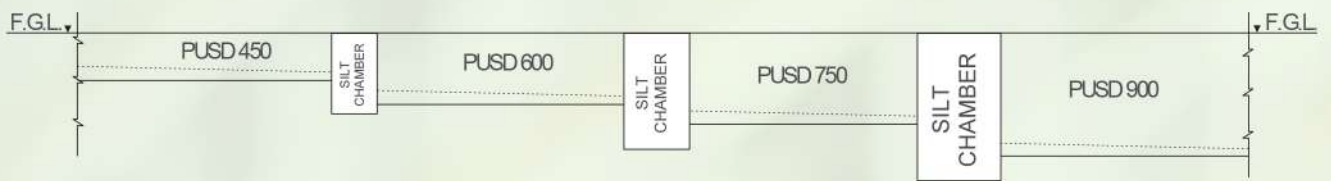
HEIGHT (MM)	DIMENSIONS							
	B	t1	t2	t3	t4	g	h	h
600	680	70	70	70	70	100	300	2000
800	760	80	80	80	80	100	400	2000
1000	850	90	90	90	90	100	500	2000
1200	970	100	100	100	100	120	600	2000
1800	1330	100	140	100	140	150	800	2000
2000	1450	100	140	100	140	150	800	2000
2250	1600	100	170	100	170	180	900	2000
2500	1750	100	170	100	170	180	900	2000

Cable & Power





Standard Section of PUSD T-6



Typical Cross Section of Slope



Esteemed Clientele



MIRAJ CONGREGATION OF JEHOVAH'S WITNESSES TRUST





FOLLOW US ON



GSTIN : 27AAPFT1718D1Z5
ISO 9001 : 2015 Co.
UDYAM No : UDYAM-MH-20-0153424(MSME)



+91 99786 57120 | 90214 55973

nagpur@trilokwall.com

www.trilokprecast.in

Kh No. 49, Mouza Sawardhota, Taluka Hingna,
Waddhamna, Nagpur, India, 440023

Scan for
Digital Copy

